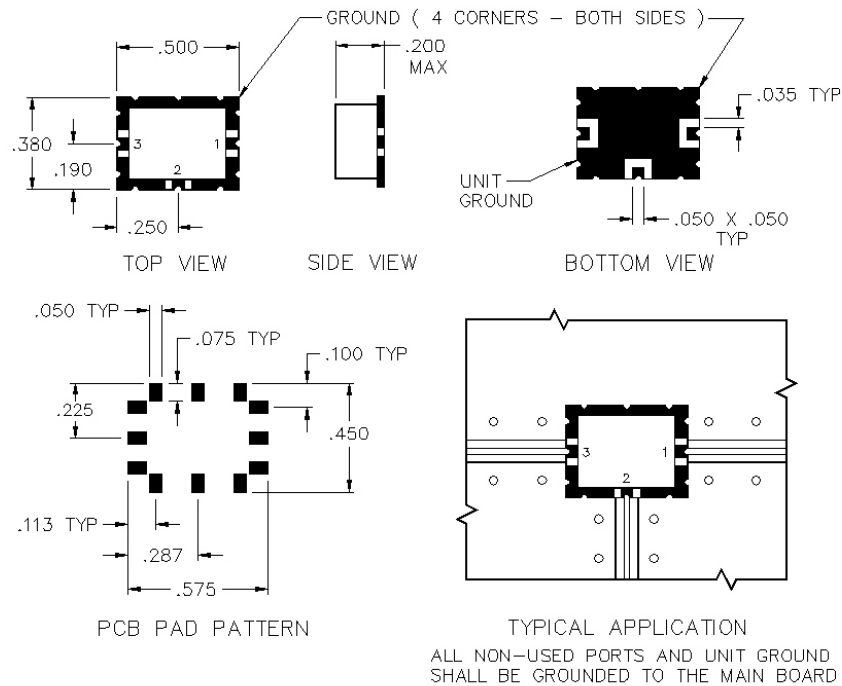


# X2M-07-A

## DC COUPLED SURFACE MOUNT DOUBLE BALANCED MIXER



### SPECIFICATIONS

Name:	X2M-07-A
Frequency Range:	
LO/RF:	800-1000 MHz
IF:	DC-200 MHz
LO Drive:	+17 dBm
Conversion Loss:	7.5 dB max.
1 dB Compression Point:	+10 dBm typ.
Isolation:	
L/R:	25 dB min.
L/I:	20 dB min.
Connector Type:	Surface

### PORT CONFIGURATION

RF:	1
LO:	3
IF:	2
Ground:	4 Corners

IF polarity is negative for DC coupled mixers.

This is a commercial off the shelf (COTS) product.  
For an equivalent product that meets DFARS materials compliance, contact sales.  
All specifications are subject to change without notice at any time. Rev: 190326

