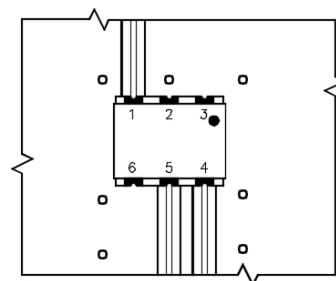
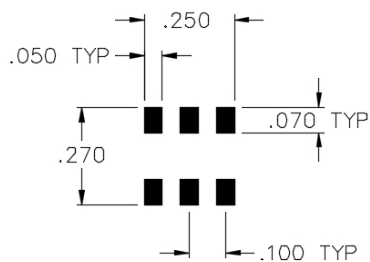
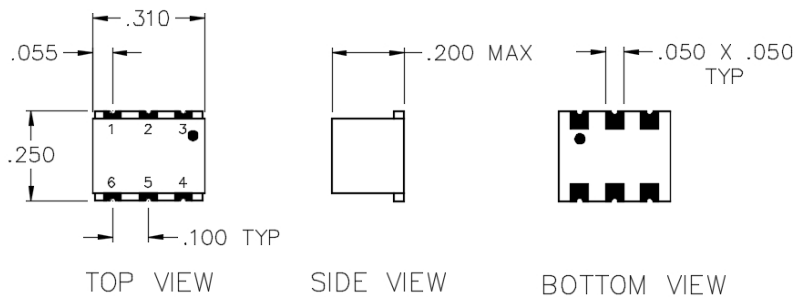


X2L-08-D

DC COUPLED SURFACE MOUNT DOUBLE BALANCED MIXER



TYPICAL APPLICATION
ALL NON-USED PORTS SHALL BE USED TO GROUND UNIT TO THE MAIN BOARD

SPECIFICATIONS

| | |
|-------------------------|-------------|
| Name: | X2L-08-D |
| Frequency Range: | |
| LO/RF: | 10-1500 MHz |
| IF: | DC-1000 MHz |
| LO Drive: | +7 dBm |
| Conversion Loss: | 8.5 dB max. |
| 1 dB Compression Point: | +1 dBm typ. |
| Isolation: | |
| L/R: | 25 dB min. |
| L/I: | 20 dB min. |
| Connector Type: | Surface |

PORT CONFIGURATION

| | |
|---------|---------|
| RF: | 4 |
| LO: | 1 |
| IF: | 5 |
| Ground: | 2, 3, 6 |

IF polarity is negative for DC coupled mixers.

This is a commercial off the shelf (COTS) product.
For an equivalent product that meets DFARS materials compliance, contact sales.
All specifications are subject to change without notice at any time. Rev: 160203

