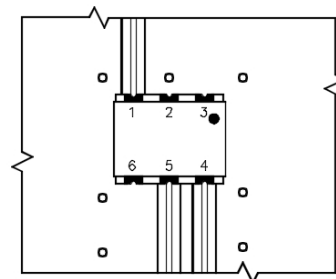
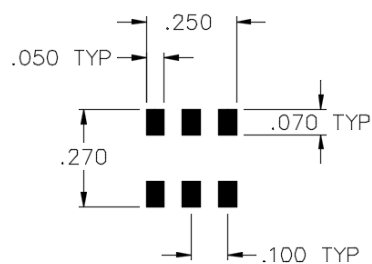
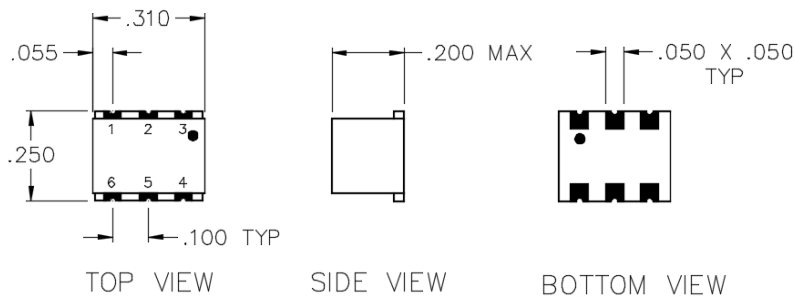


X2L-07-D

DC COUPLED SURFACE MOUNT DOUBLE BALANCED MIXER



TYPICAL APPLICATION
ALL NON-USED PORTS SHALL BE USED TO GROUND UNIT TO THE MAIN BOARD

SPECIFICATIONS

Name:	X2L-07-D
Frequency Range:	
LO/RF:	800-1000 MHz
IF:	DC-200 MHz
LO Drive:	+7 dBm
Conversion Loss:	7.5 dB max.
1 dB Compression Point:	+1 dBm typ.
Isolation:	
L/R:	25 dB min.
L/I:	20 dB min.
Connector Type:	Surface

PORT CONFIGURATION

RF:	4
LO:	1
IF:	5
Ground:	2, 3, 6

IF polarity is negative for DC coupled mixers.

This is a commercial off the shelf (COTS) product.
For an equivalent product that meets DFARS materials compliance, contact sales.
All specifications are subject to change without notice at any time. Rev: 160203

