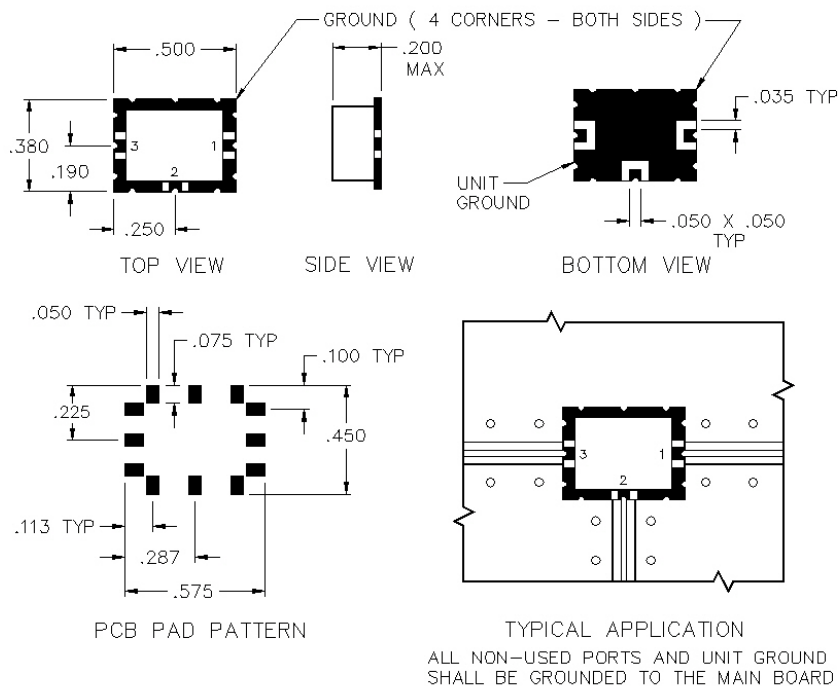


X2L-07-A

DC COUPLED SURFACE MOUNT DOUBLE BALANCED MIXER



SPECIFICATIONS

| | |
|-------------------------|--------------|
| Name: | X2L-07-A |
| Frequency Range: | |
| LO/RF: | 800-1000 MHz |
| IF: | DC-200 MHz |
| LO Drive: | +7 dBm |
| Conversion Loss: | 7.5 dB max. |
| 1 dB Compression Point: | +1 dBm typ. |
| Isolation: | |
| L/R: | 25 dB min. |
| L/I: | 20 dB min. |
| Connector Type: | Surface |

PORT CONFIGURATION

| | |
|---------|-----------|
| RF: | 1 |
| LO: | 3 |
| IF: | 2 |
| Ground: | 4 Corners |

IF polarity is negative for DC coupled mixers.

This is a commercial off the shelf (COTS) product.
For an equivalent product that meets DFARS materials compliance, contact sales.
All specifications are subject to change without notice at any time. Rev: 190326

