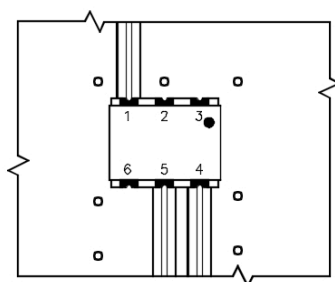
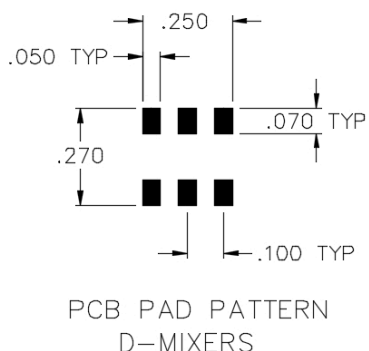
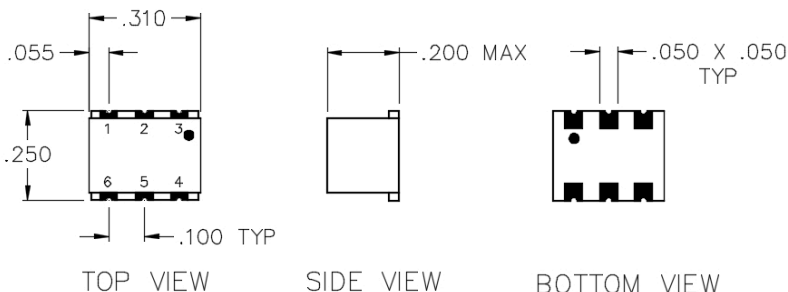
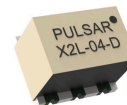


X2L-04-D

DC COUPLED DOUBLE BALANCED MIXER



ALL NON-USED PORTS SHALL BE USED TO GROUND UNIT TO THE MAIN BOARD

SPECIFICATIONS

Name:	X2L-04-D
Frequency Range:	
LO/RF:	0.1-750 MHz
IF:	DC-750 MHz
LO Drive:	+7 dBm
Conversion Loss:	8.0 dB max.
1 dB Compression Point:	+1 dBm typ.
Isolation:	
L/R:	25 dB min.
L/I:	20 dB min.
Connector Type:	Surface

PORT CONFIGURATION

RF:	4
LO:	1
IF:	5
Ground:	2, 3, 6

IF polarity is negative for DC coupled mixers.

This is a commercial off the shelf (COTS) product.
For an equivalent product that meets DFARS materials compliance, contact sales.
All specifications are subject to change without notice at any time. Rev: 250614

