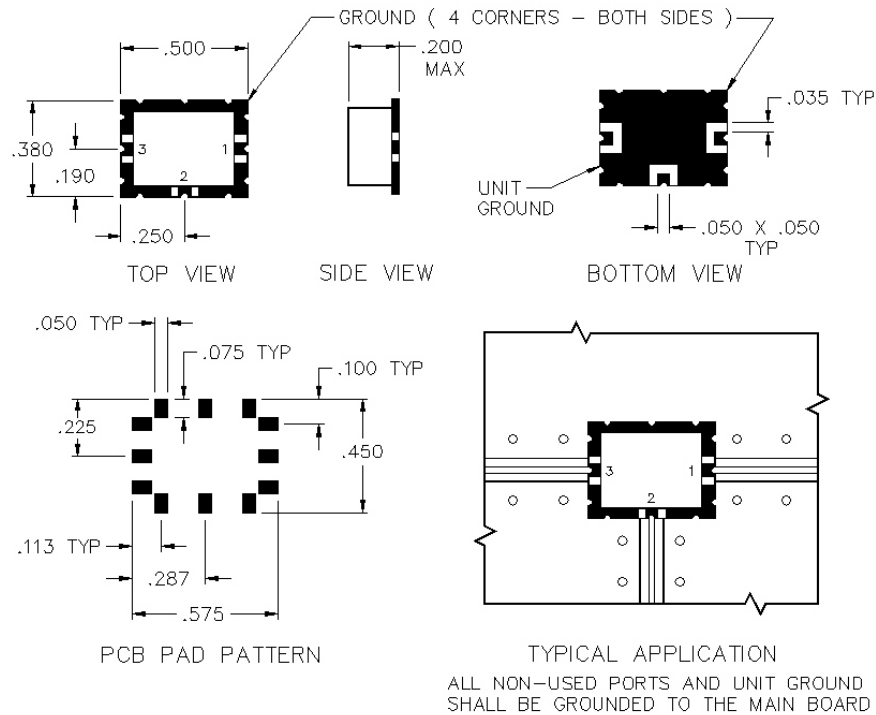


X1V-02-A

AC COUPLED SURFACE MOUNT TRIPLE BALANCED MIXER



SPECIFICATIONS

Name:	X1V-02-A
Frequency Range:	
LO/RF:	0.5-1000 MHz
IF:	0.5-1000 MHz
LO Drive:	+27 dBm
Conversion Loss:	8.0 dB max.
1 dB Compression Point:	+20 dBm typ.
Isolation:	
L/R:	25 dB min.
L/I:	20 dB min.
Connector Type:	Surface

PORT CONFIGURATION

RF:	1
LO:	3
IF:	2
Ground:	4 Corners

This is a commercial off the shelf (COTS) product.
For an equivalent product that meets DFARS materials compliance, contact sales.
All specifications are subject to change without notice at any time. Rev: 190326