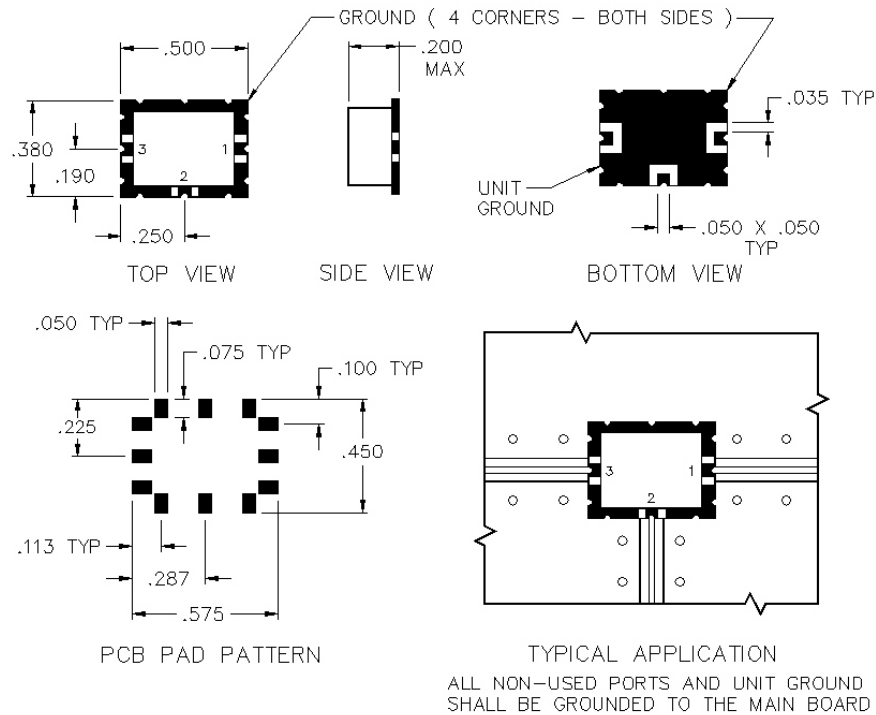


X1H-02-A

AC COUPLED SURFACE MOUNT TRIPLE BALANCED MIXER



SPECIFICATIONS

| | |
|-------------------------|--------------|
| Name: | X1H-02-A |
| Frequency Range: | |
| LO/RF: | 0.5-1000 MHz |
| IF: | 0.5-1000 MHz |
| LO Drive: | +23 dBm |
| Conversion Loss: | 8.0 dB max. |
| 1 dB Compression Point: | +16 dBm typ. |
| Isolation: | |
| L/R: | 25 dB min. |
| L/I: | 20 dB min. |
| Connector Type: | Surface |

PORT CONFIGURATION

| | |
|---------|-----------|
| RF: | 1 |
| LO: | 3 |
| IF: | 2 |
| Ground: | 4 Corners |

This is a commercial off the shelf (COTS) product.
For an equivalent product that meets DFARS materials compliance, contact sales.
All specifications are subject to change without notice at any time. Rev: 190326

