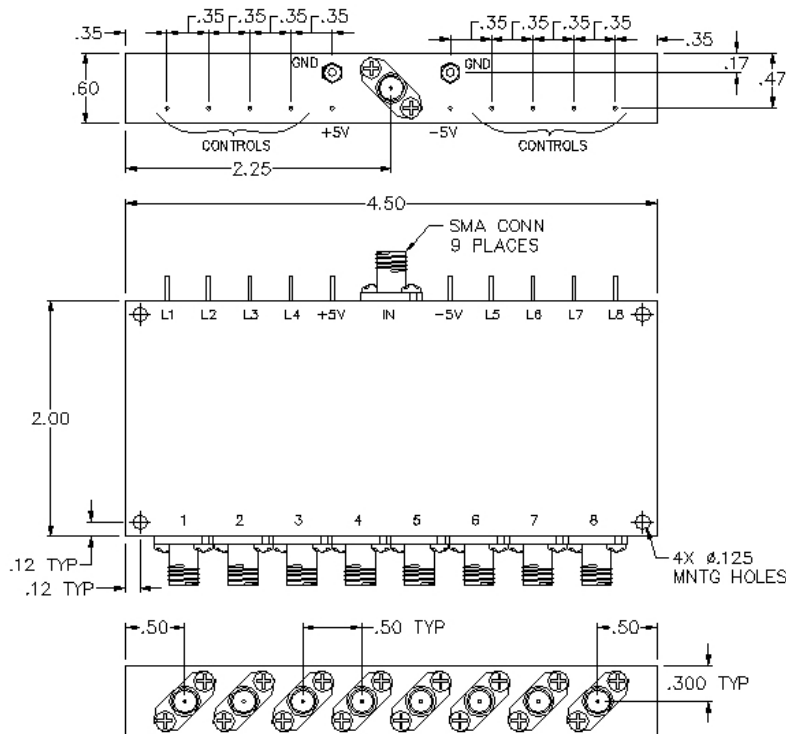
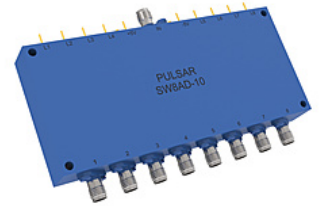


SW8AD-10

SP8T SMA ABSORPTIVE SWITCH



SPECIFICATIONS

Name:	SW8AD-10
Input Frequency Range:	0.5-2 GHz
Switch Type:	SP8T
Insertion Loss:	2.4 dB max.
Input Power:	200 mw / 23 dBm
Isolation:	60 dB min.
VSWR:	1.60:1
Switching Time:	100 nsec
Connector Type:	SMA

TTL CONTROL LOGIC

When L(1-8) = TTL LOW, Output(1-8) = Loss
When L(1-8) = TTL HIGH, Output(1-8) = Isolation

This is a commercial off the shelf (COTS) product.
For an equivalent product that meets DFARS materials compliance, contact sales.
All specifications are subject to change without notice at any time. Rev: 170201

www.pulsarmicrowave.com · 48 Industrial St West, Clifton NJ 07012 · Tel: 973-779-6262 · Fax: 973-779-2727 · sales@pulsarmicrowave.com

PULSAR
MICROWAVE CORPORATION