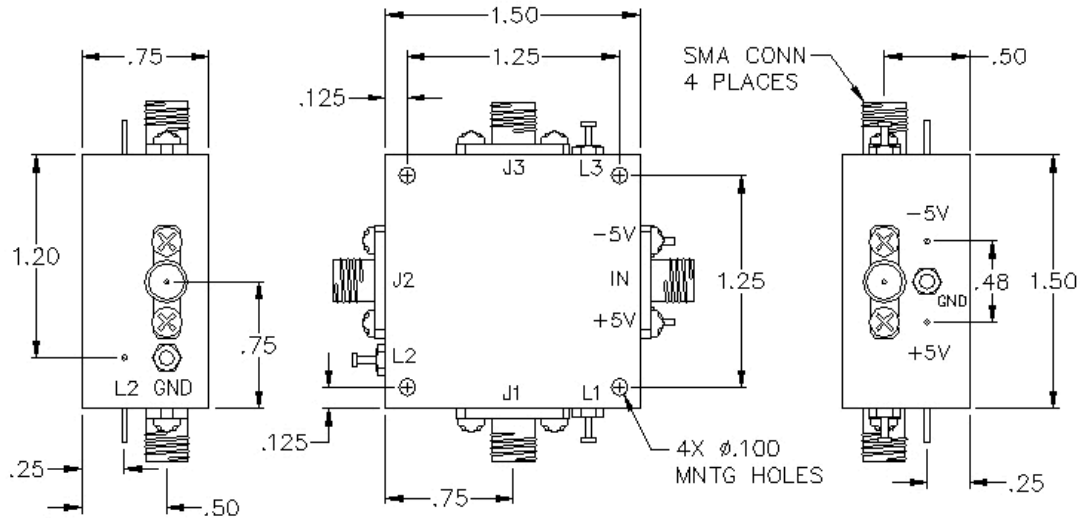
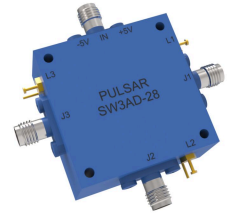


SW3AD-28

SP3T ABSORPTIVE PIN DIODE SWITCH



SPECIFICATIONS

Name:	SW3AD-28
Input Frequency Range:	0.2-6 GHz
Switch Type:	SP3T
Insertion Loss:	2.5 dB max.
Input Power:	200 mw / 23 dBm
Isolation:	70 dB min.
VSWR:	1.70:1
Switching Time:	100 nsec
Connector Type:	SMA

TTL CONTROL LOGIC

L1	L2	L3	IN-J1	IN-J2	IN-J3
0	1	1	Insertion Loss	Isolation	Isolation
1	0	1	Isolation	Insertion Loss	Isolation
1	1	0	Isolation	Isolation	Insertion Loss

This is a commercial off the shelf (COTS) product.

For an equivalent product that meets DFARS materials compliance, contact sales.

All specifications are subject to change without notice at any time. Rev: 250614