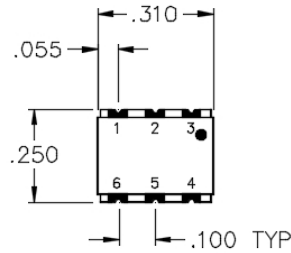
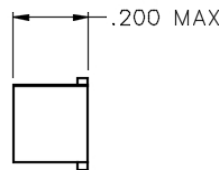


QT-25-D

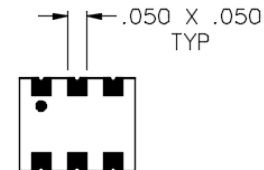
3 DB SURFACE MOUNT 90° HYBRID COUPLER



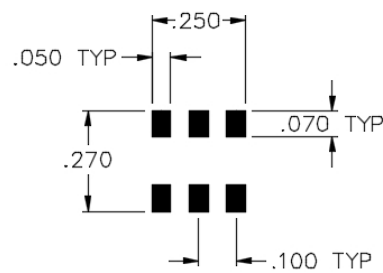
TOP VIEW



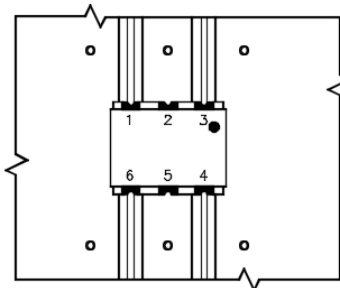
SIDE VIEW



BOTTOM VIEW



PCB PAD PATTERN
D-HYBRID



TYPICAL APPLICATION

ALL NON-USED PORTS SHALL BE USED
TO GROUND UNIT TO THE MAIN BOARD

SPECIFICATIONS

| | |
|--------------------|-------------|
| Name: | QT-25-D |
| Bandwidth: | 10% |
| Center Frequency: | 600 MHz |
| Frequency Range: | 570-630 MHz |
| Insertion Loss: | 0.4 dB max. |
| Isolation: | 20 dB min. |
| Amplitude Balance: | 1.0 dB max. |
| Phase Balance: | 2° max. |
| VSWR: | 1.30:1 max. |
| Package Type: | Surface |

PORT CONFIGURATION

| | |
|-------------|------|
| Input: | 1 |
| 90° Output: | 6 |
| 0° Output: | 4 |
| Isolated: | 3 |
| Ground: | 2, 5 |

Power rating 1 watt max. for load VSWR better than 1.20:1.

This is a commercial off the shelf (COTS) product.

For an equivalent product that meets DFARS materials compliance, contact sales.

All specifications are subject to change without notice at any time. Rev: 160203