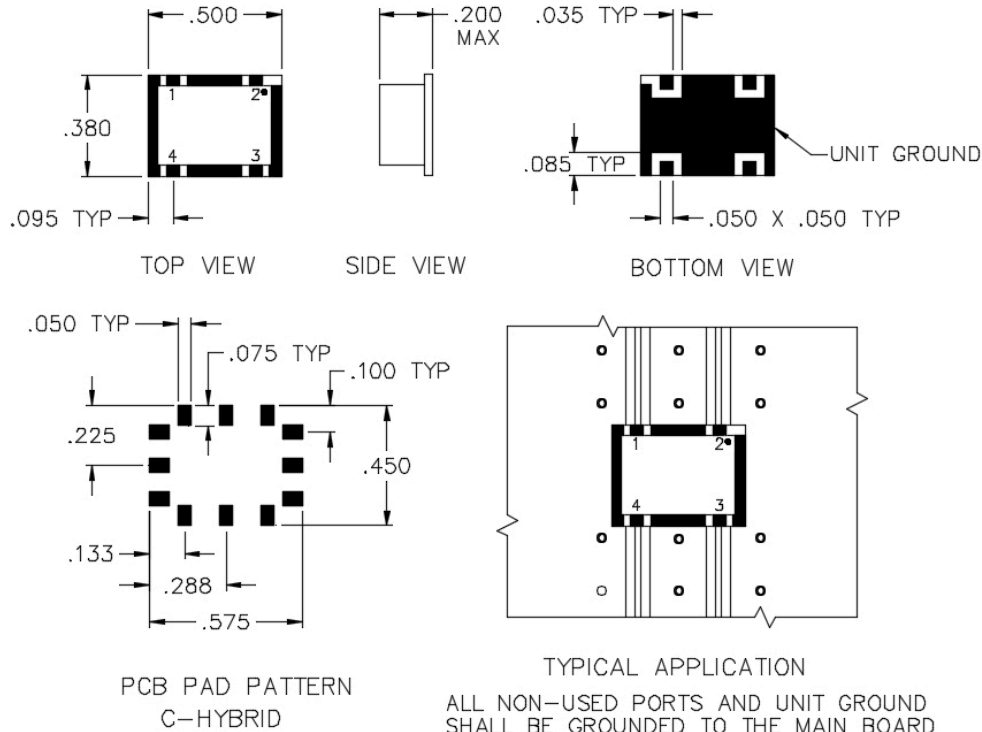


# Q2-11-C

## 3 DB 90° HYBRID COUPLER



### SPECIFICATIONS

Name:	Q2-11-C
Bandwidth:	2:1
Frequency Range:	100-200 MHz
Insertion Loss:	0.5 dB max.
Isolation:	20 dB min.
Amplitude Balance:	0.8 dB max.
Phase Balance:	3° max.
VSWR:	1.40:1 max.
Package Type:	Surface

### PORT CONFIGURATION

Input:	1
90° Output:	4
0° Output:	3
Isolated:	2
Ground:	4 Corners

Power rating 1 watt max. for load VSWR better than 1.20:1.

This is a commercial off the shelf (COTS) product.

For an equivalent product that meets DFARS materials compliance, contact sales.

All specifications are subject to change without notice at any time. Rev: 250614