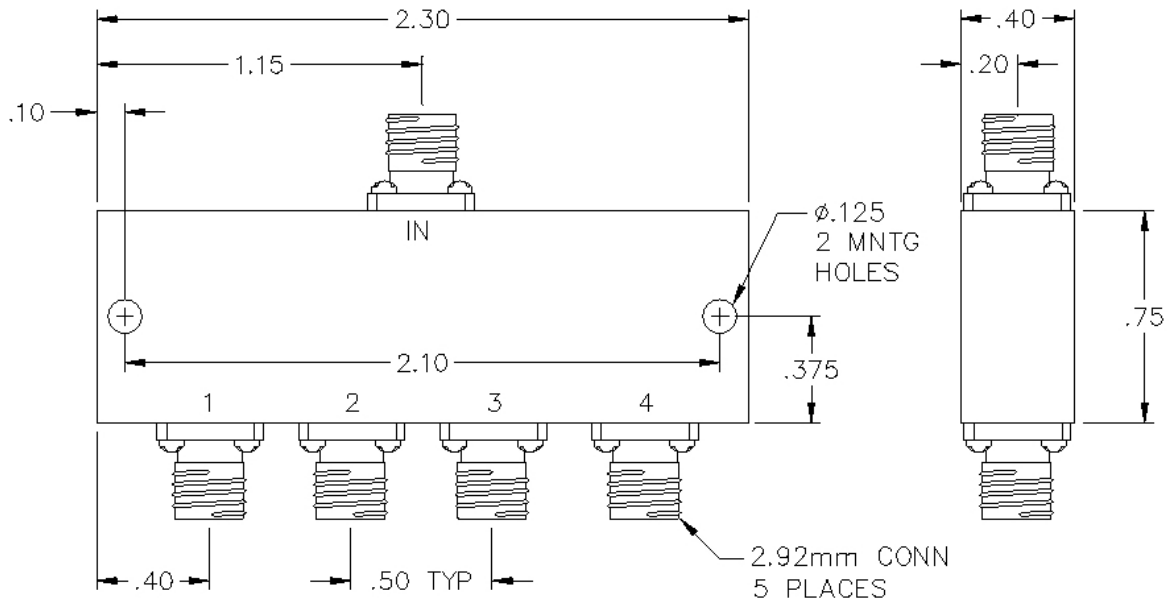


PS4-56-452/13S

4-WAY 2.92MM POWER DIVIDER



SPECIFICATIONS

Name:	PS4-56-452/13S
Frequency Range:	10-40 GHz
Insertion Loss:	2.0 dB max.
Isolation:	12 dB min.
Amplitude Balance:	0.8 dB max.
Phase Balance:	12° max.
VSWR:	1.90:1 max.
Input Power:	10 watts max.
Connector Type:	2.92

Input power is specified for load VSWR better than 1.20:1.
Contact Pulsar for power rating as a combiner.

This is a commercial off the shelf (COTS) product.
For an equivalent product that meets DFARS materials compliance, contact sales.
All specifications are subject to change without notice at any time. Rev: 201202

www.pulsarmicrowave.com · 48 Industrial St West, Clifton NJ 07012 · Tel: 973-779-6262 · Fax: 973-779-2727 · sales@pulsarmicrowave.com

PULSAR
MICROWAVE CORPORATION