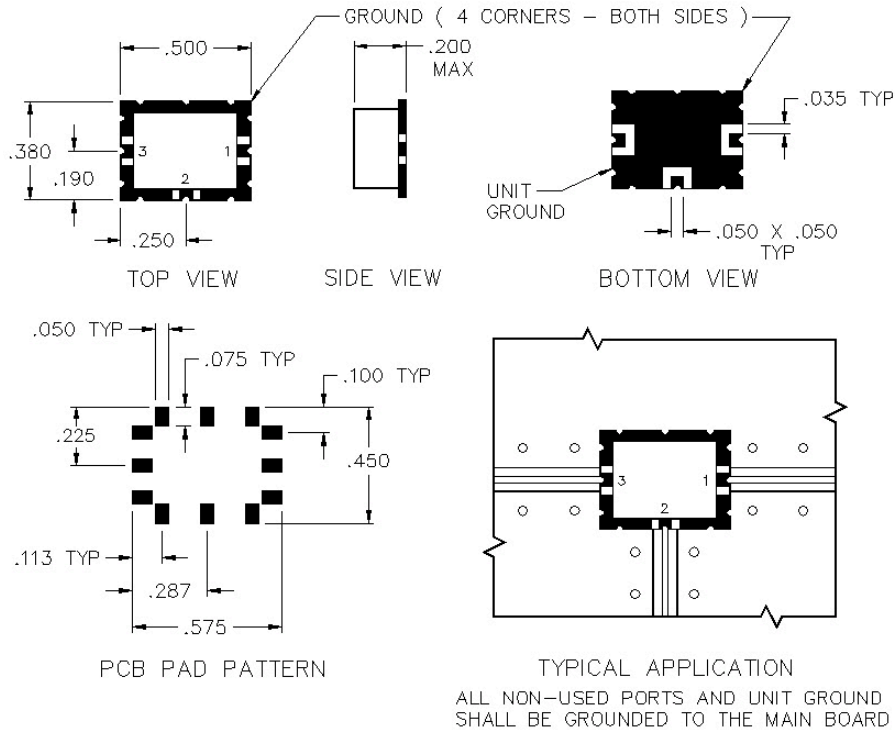
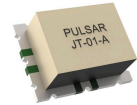


# JT-01-A

## 3 PORT 3 DB 180° HYBRID COUPLER



### SPECIFICATIONS

Name:	JT-01-A
Frequency Range:	0.3-20 MHz
Insertion Loss:	0.8 dB max.
Isolation A-B:	25 dB min.
Input Power:	1 watts max.
Amplitude Balance:	0.2 dB max.
Phase Balance:	2° max.
VSWR:	1.30:1 max.
Package Type:	Surface

### PORT CONFIGURATION

Delta:	2
A (0°):	1
B (180°):	3
Ground:	4 Corners

Amplitude balance is defined by input Sum or Delta to output A & B.

This is a commercial off the shelf (COTS) product.  
For an equivalent product that meets DFARS materials compliance, contact sales.  
All specifications are subject to change without notice at any time. Rev: 250614

