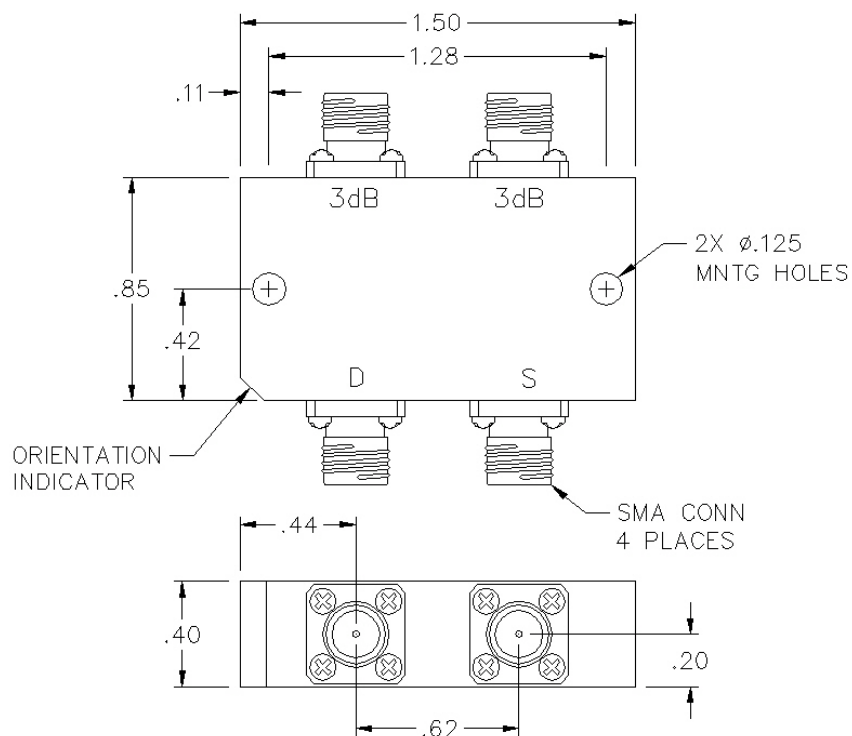


JSO-03-465/5S

4 PORT 3 DB SMA 180° HYBRID COUPLER



SPECIFICATIONS

Name:	JSO-03-465/5S
Frequency Range:	4-8 GHz
Insertion Loss:	0.6 dB max.
Isolation A-B:	18 dB min.
Power Rating:	80 watts max.
Amplitude Balance:	±0.5 dB max.
Phase Balance:	±10° max.
VSWR:	1.90:1 max.
Connector Type:	SMA

This is a commercial off the shelf (COTS) product.

For an equivalent product that meets DFARS materials compliance, contact sales.

All specifications are subject to change without notice at any time. Rev: 190326