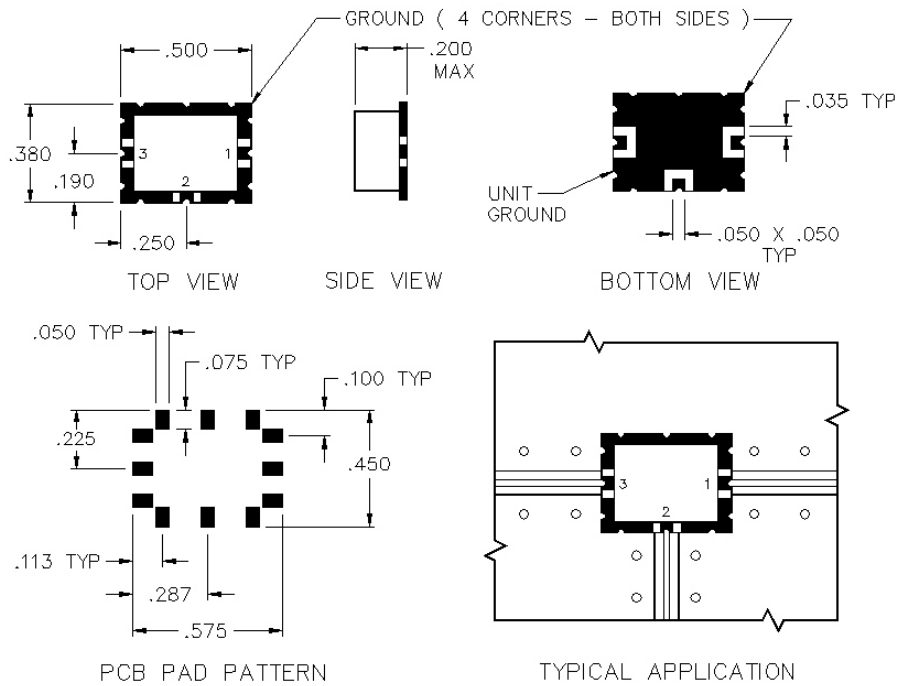


# BP-03-A

## BI-PHASE MODULATOR



TYPICAL APPLICATION  
ALL NON-USED PORTS AND UNIT GROUND  
SHALL BE GROUND TO THE MAIN BOARD

## SPECIFICATIONS

Name:	BP-03-A
Frequency Range:	5-1000 MHz
Insertion Loss:	4.5 dB max.
Input Power:	+10 dBm max.
Amplitude Balance:	0.4 dB max.
Phase Balance:	4° max.
VSWR:	1.80:1 max.
Carrier Suppression:	30 dBc Typ.
Package Type:	Surface

Control currents are  $\pm 20$  mA DC.

## PORT CONFIGURATION

Input:	1
Output:	3
D - 1:	2
Ground:	4 Corners

This is a commercial off the shelf (COTS) product.  
For an equivalent product that meets DFARS materials compliance, contact sales.  
All specifications are subject to change without notice at any time. Rev: 190326

