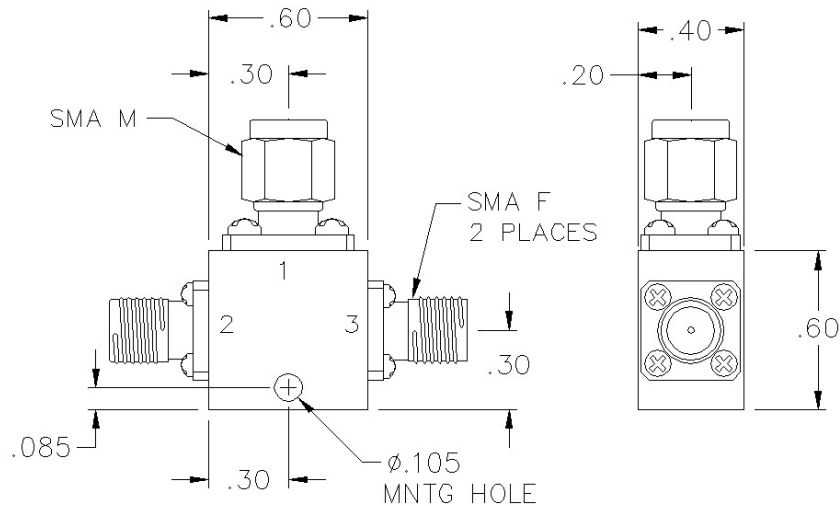


# RP2-04-417

## 2-WAY RESISTIVE POWER DIVIDER



### SPECIFICATIONS

Name:	RP2-04-417
Frequency Range:	DC-18 GHz
Insertion Loss:	1.5 dB max.
Amplitude Balance:	0.5 dB max.
Phase Balance:	8° max.
VSWR:	1.50:1 max.
Input Power:	0.5 watts max.
Connector Type:	SMA

Insertion Loss does not include 6 dB theoretical loss.

### PORT CONFIGURATION

Input:	1
Outputs:	2, 3

This is a commercial off the shelf (COTS) product.

For an equivalent product that meets DFARS materials compliance, contact sales.

All specifications are subject to change without notice at any time. Rev: 250614