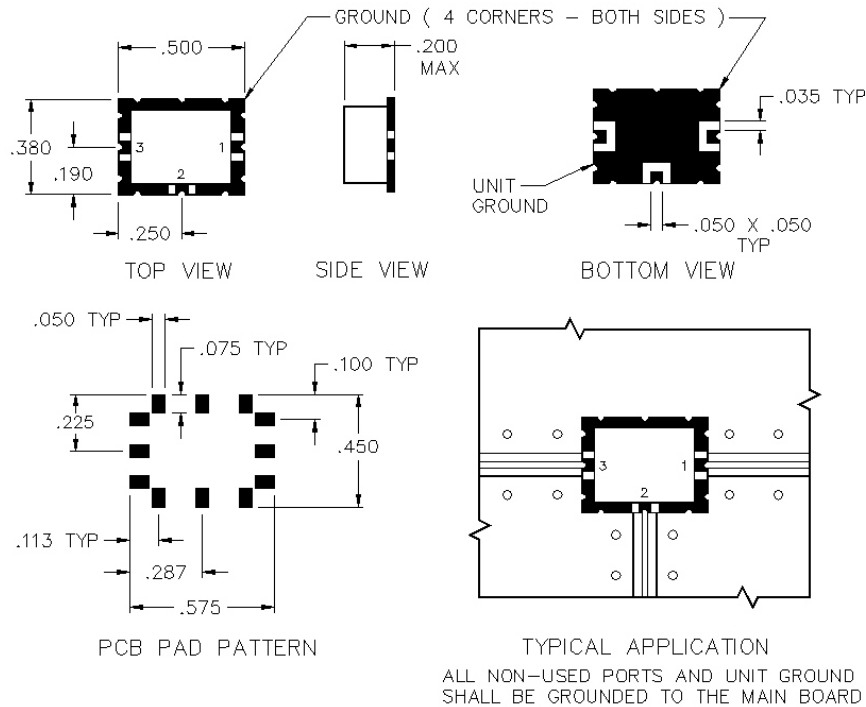


# C4-03-A

## SURFACE MOUNT DIRECTIONAL COUPLER



## SPECIFICATIONS

Name:	C4-03-A
Frequency Range:	0.5-100 MHz
Coupling:	20.0 ± 0.5 dB
Coupling Flatness:	±0.25 dB max.
Insertion Loss:	0.4 dB max.
Directivity:	20 dB min.
VSWR:	1.20:1 max.
Input Power:	3 watts max.
Package Type:	Surface

Insertion loss does not include coupling loss.

Input power is specified for load VSWR better than 1.20:1.

Dual directional couplers, other frequency ranges, coupling values and higher power models available.

## PORT CONFIGURATION

Input:	1
Output:	3
Coupled:	2
Ground:	4 Corners

This is a commercial off the shelf (COTS) product.

For an equivalent product that meets DFARS materials compliance, contact sales.

All specifications are subject to change without notice at any time. Rev: 190326