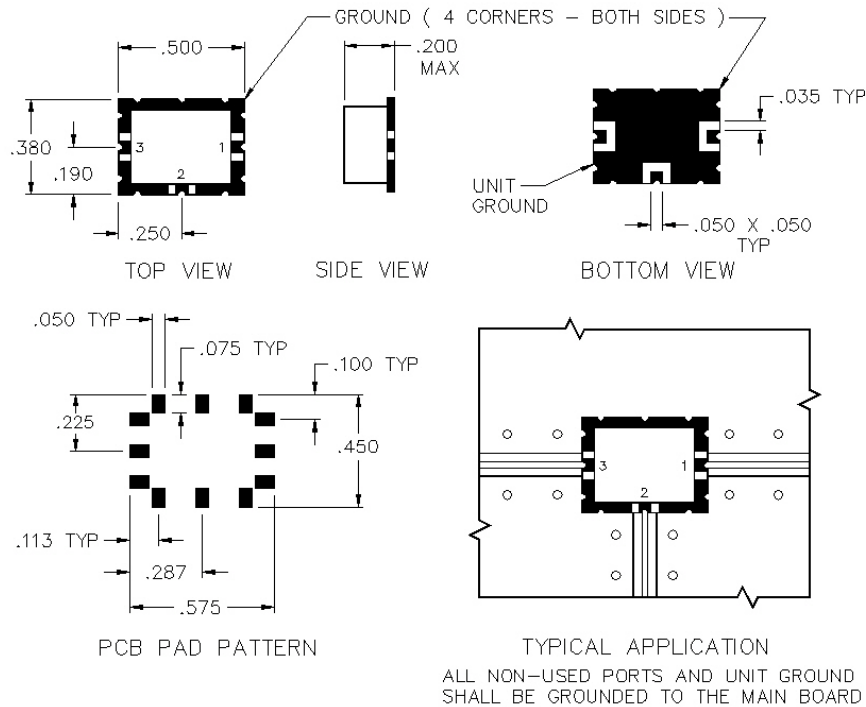


# C2-07-A

## SURFACE MOUNT DIRECTIONAL COUPLER



## SPECIFICATIONS

|                    |               |
|--------------------|---------------|
| Name:              | C2-07-A       |
| Frequency Range:   | 1-750 MHz     |
| Coupling:          | 11.5 ± 0.5 dB |
| Coupling Flatness: | ±0.40 dB max. |
| Insertion Loss:    | 1.3 dB max.   |
| Directivity:       | 23 dB min.    |
| VSWR:              | 1.30:1 max.   |
| Input Power:       | 1 watts max.  |
| Package Type:      | Surface       |

Insertion loss does not include coupling loss.

Input power is specified for load VSWR better than 1.20:1.

Dual directional couplers, other frequency ranges, coupling values and higher power models available.

## PORT CONFIGURATION

|          |           |
|----------|-----------|
| Input:   | 1         |
| Output:  | 3         |
| Coupled: | 2         |
| Ground:  | 4 Corners |

This is a commercial off the shelf (COTS) product.

For an equivalent product that meets DFARS materials compliance, contact sales.

All specifications are subject to change without notice at any time. Rev: 190326