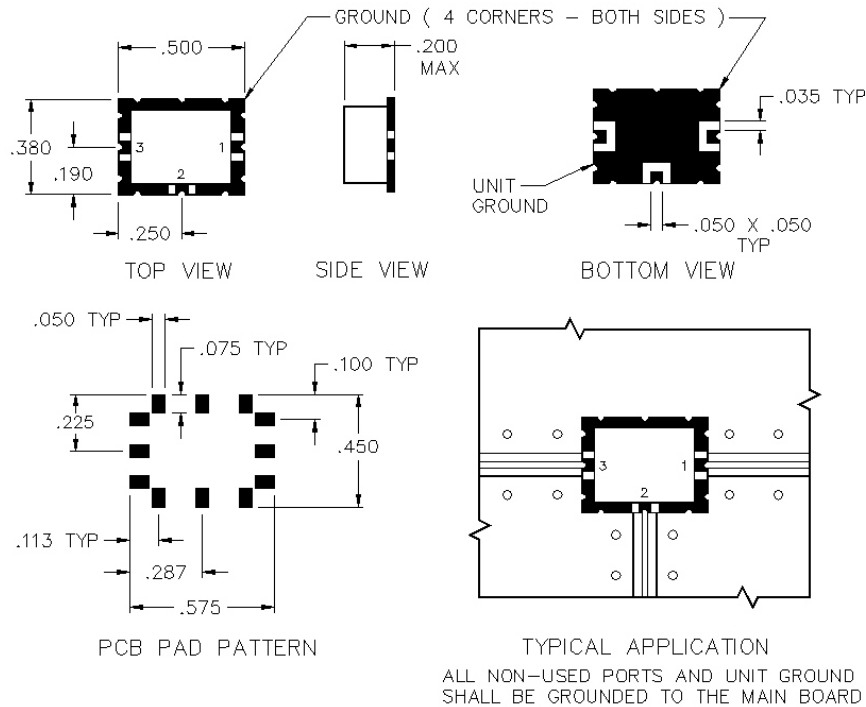


C1-07-A

SURFACE MOUNT DIRECTIONAL COUPLER



SPECIFICATIONS

| | |
|--------------------|---------------|
| Name: | C1-07-A |
| Frequency Range: | 1-750 MHz |
| Coupling: | 10.0 ± 0.5 dB |
| Coupling Flatness: | ±0.40 dB max. |
| Insertion Loss: | 1.5 dB max. |
| Directivity: | 23 dB min. |
| VSWR: | 1.30:1 max. |
| Input Power: | 1 watts max. |
| Package Type: | Surface |

Insertion loss does not include coupling loss.

Input power is specified for load VSWR better than 1.20:1.

Dual directional couplers, other frequency ranges, coupling values and higher power models available.

PORT CONFIGURATION

| | |
|----------|-----------|
| Input: | 1 |
| Output: | 3 |
| Coupled: | 2 |
| Ground: | 4 Corners |

This is a commercial off the shelf (COTS) product.

For an equivalent product that meets DFARS materials compliance, contact sales.

All specifications are subject to change without notice at any time. Rev: 190326